







10-18-96  
JR 3000 BS  
1085-2000

4

5

4

16

23

24

25

26

SCALE 1" = 300'  
JANUARY 1, 1996

\* Inadequate description indicates survey on file with tax map dept.

RELATIVE REPRESENTATION

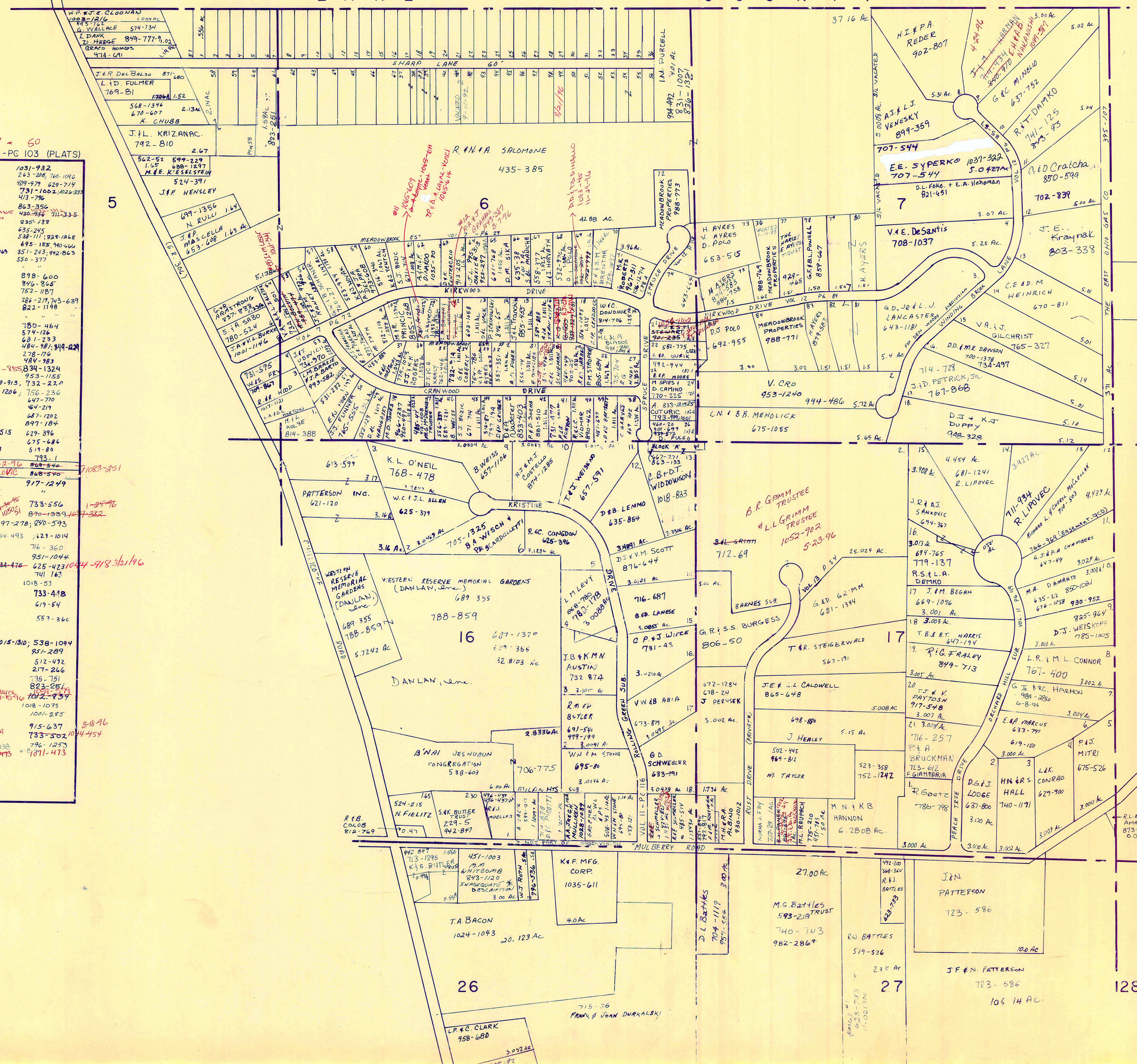
A	B	C	D
E	F	G	H
I	J	K	L
M	N	O	P

CHESTER B

L A K E C O U N T Y

7 = 50  
E. SHARP SURVEY VOL. 6 - PG. 103 (PLATS)

1. M. SANTEK	1031-932
2. D. L. CICHELLA	243-206, 160-1096
3. J. SALVO	401-979, 629-714
4. S. EDICENZO & A. DI PAOLO	731-1002, 1026-333
5. B. L. HOLDER	493-376
6. F. M. MARRA	863-356
7. J. J. DI BASTO & S. VANANONNE	440-386, 311-335
8. V. T. IANIRO	835-288
9. V. IANIRO	635-245
10. B. J. WHITNEY	538-111, 828-1048
11. A. B. TAYLOR	675-155, 940-666
12. J. T. SKIRA TRUST	703-1169
13. J. M. SMITH	350-377
14.	
15. S. J. PLA	879-600
16. M. I. KOVACIC	846-845
17. R. M. & L. E. DINARDO	752-1187
18. C. T. & G. B. REZINA	286-219, 713-639
19. A. D. ORLANDO	822-1198
20.	
21. J. A. WARGELIN	180-464
22. W. J. COOPER	574-126
23. J. F. DUMOVIC	681-233
24. J. D. BOZIC	484-981, 849-829
25.	
26.	
27. J. B. ADAMS	1571-955, 834-1324
28. M. R. & J. KOSLEY	953-1155
29. F. RUZIC	989-913, 732-230
30. C. E. HECKMAN	661-1206, 756-236
31. S. J. & M. J. REESE	647-770
32. G. M. REESE	441-219
33. M. P. HIESH	682-202
34. P. W. DAVID & L. R. KLAUSS	897-184
35. T. A. METRUL	667-515, 629-396
36.	675-684
37. D. WEY	W-20 #38, 519-80
38. D. CORCELLI (E-60)	793-1
39. K. W. HANSEN & L. SMITH (W-10)	868-540
40. K. W. HANSEN & L. SMITH (W-10)	868-540
41. R. A. CALABRESE	917-1249
42.	
43. H. T. & J. RACHENSKI	733-556
44. R. MLAKAR	870-1339, 147-382
45. T. R. VERNON & S. S. SULENTON	997-278, 840-593
46. D. A. KRAMER	764-493, 121-1014
47. G. W. & S. L. STUHF	716-360
48. K. A. SCHAUER	951-1044
49. G. W. & S. L. STUHF	625-423, 1044-918, 312-146
50. G. D. KLEINSORGE & J. I. MOORE	741-183
51. B. M. V. VERK	1018-53
52. R. P. SHOLTIS	733-418
53. N. C. GRASSI	619-54
54. R. K. SHISILA	557-366
55.	
56. B. J. STEBIC	1015-180, 538-1094
57. M. A. & P. J. PETTI	951-289
58. F. C. CARLO	512-972
59. E. SHARP	217-246
60. S. L. SHARP	735-751
61. A. G. MULLIKEN	823-251
62. L. D. FRANCO & J. M. G. MARCO	1012-137
63. LINCOLN TRUST CO.	1018-1075
64. G. W. WHITE & M. GRAF	1001-285
65. G. D. WHITE	915-637
66. S. A. & D. L. BEAVR	733-502, 1044-454
67. T. NEOLIC (M-20)	796-1253
	1071-473



SCALE 1" = 300'  
JAN 1, 1996

\* Inadequate description  
✓ indicates survey on file with tax map dept.

RELATIVE REPRESENTATION

A	B	D
E	F	G
I	J	K
M	N	O

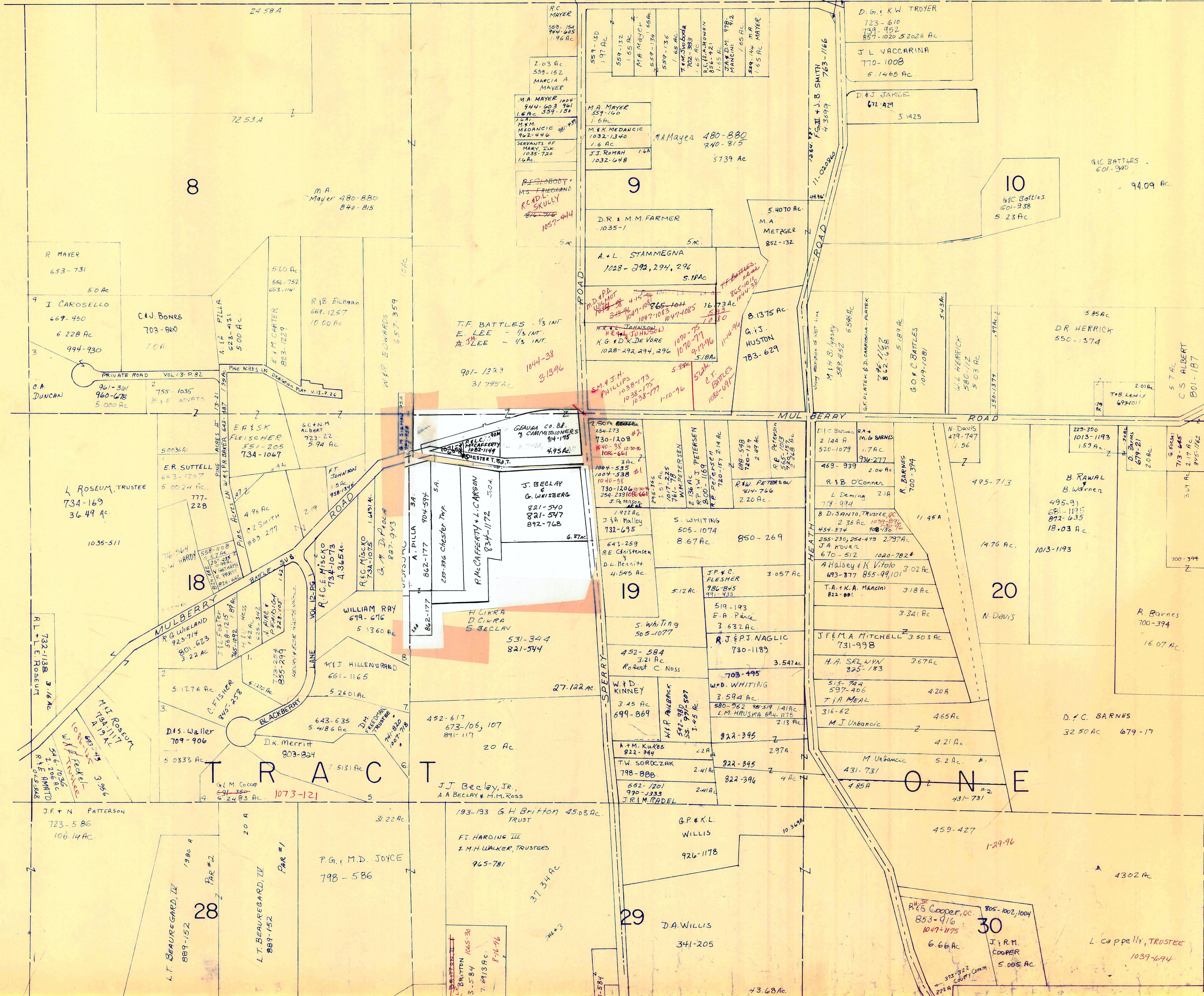
CHESTER C

L A K E

G E M R O A D

C O U N T Y

C H A R D O N T O W N S H I P



T O W N S H I P

C H E S T E R

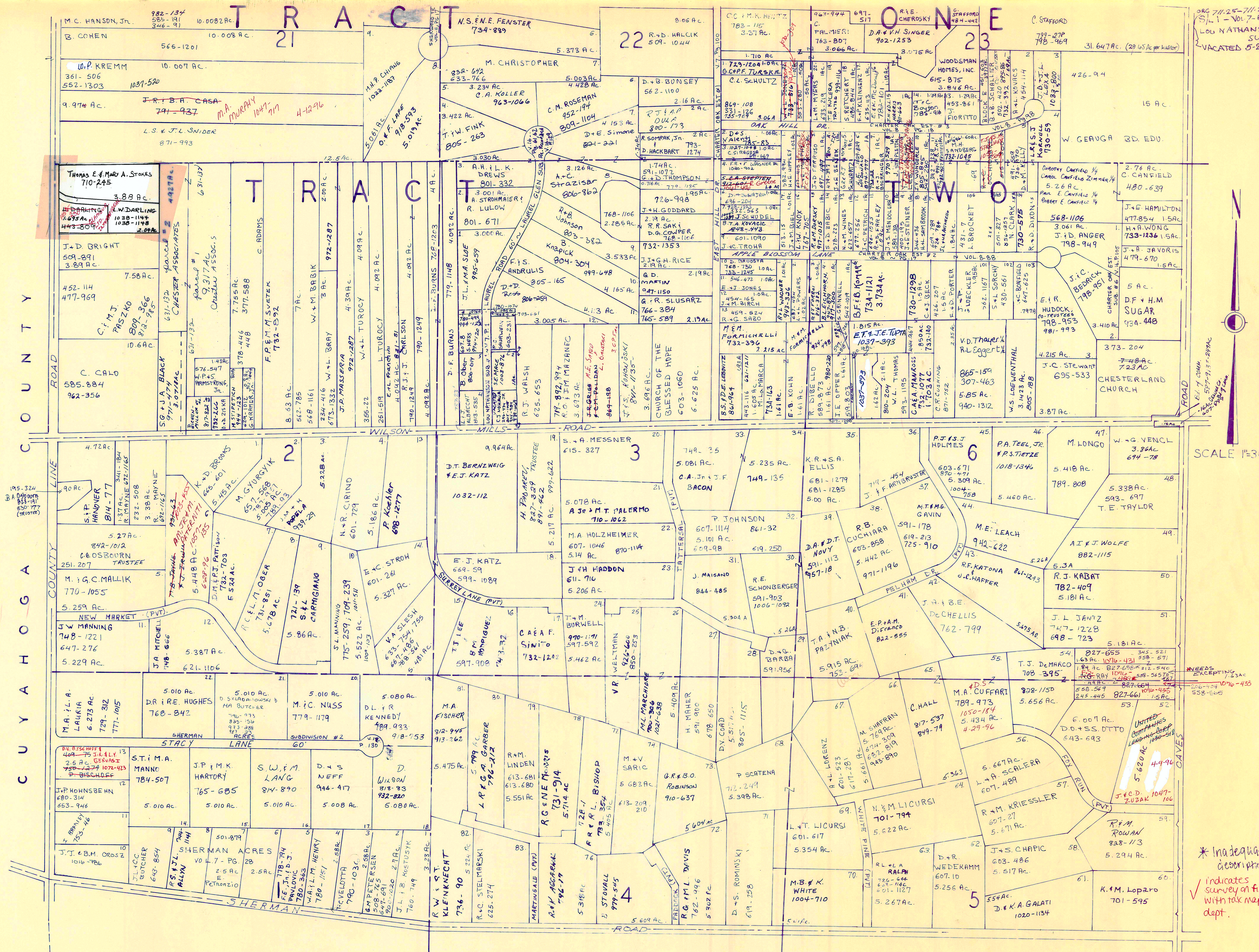
SCALE 1"=300'

✓ indicates survey on file with tax map dept.  
 \* Inadequate description

JANUARY 1, 1996  
 RELATIVE REPRESENTATION

A	B	C
E	F	G
I	J	K
M	N	O

CHESTER D



C U Y A H O G A COUNTY ROAD

SCALE 1"=300'

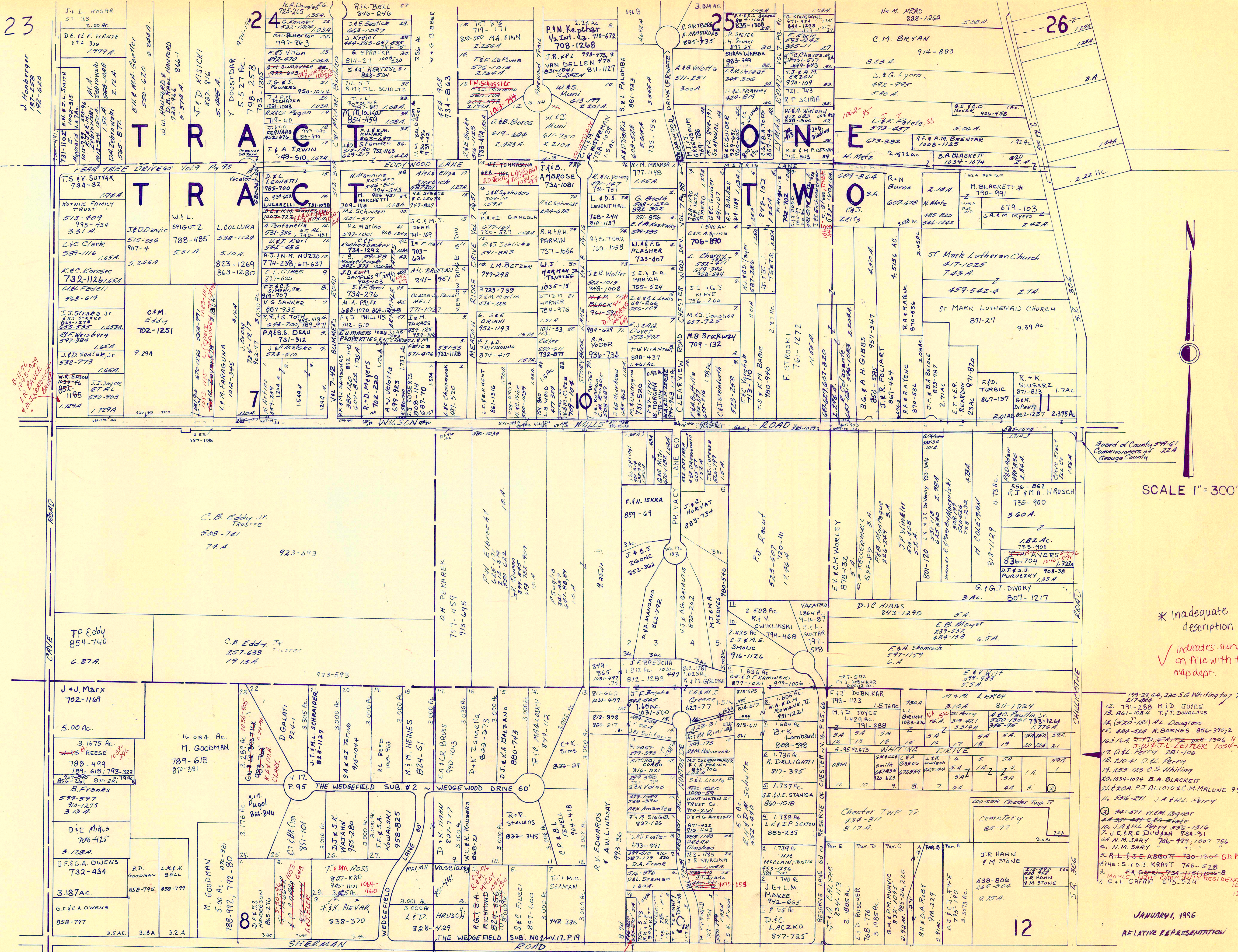
\* Inadequate description indicates survey on file with tax map dept.

NEEDS EXCEPTING 1.23 AC  
 1076-430  
 1076-430  
 558-545

UNAPPROPRIATE 5.620 AC  
 49-96  
 J. & E. D. ZUZAK 1047-106

JANUARY 1, 1996  
 Relative Representation

A	B	C	D
E	F	G	H
I	J	K	L
M	N	O	P



5 1/2 x 100  
 100 x 100  
 100 x 100  
 100 x 100

Board of County Surveyors  
 Commissioners of Georgia County

SCALE 1" = 300'

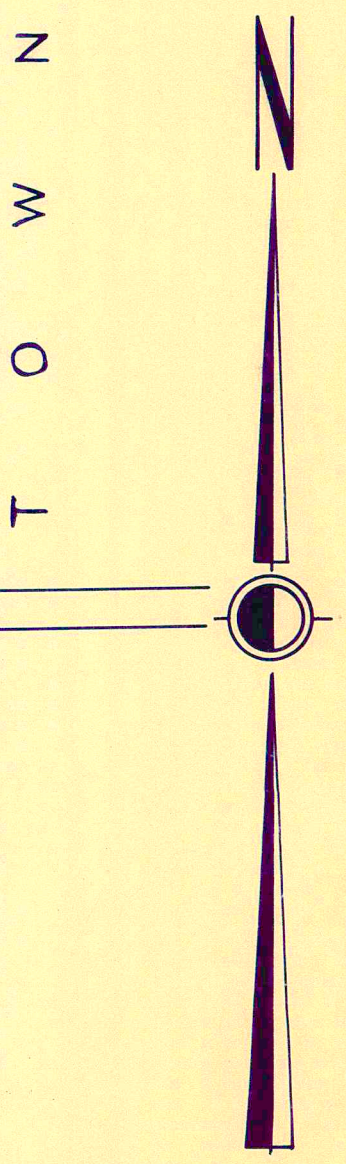
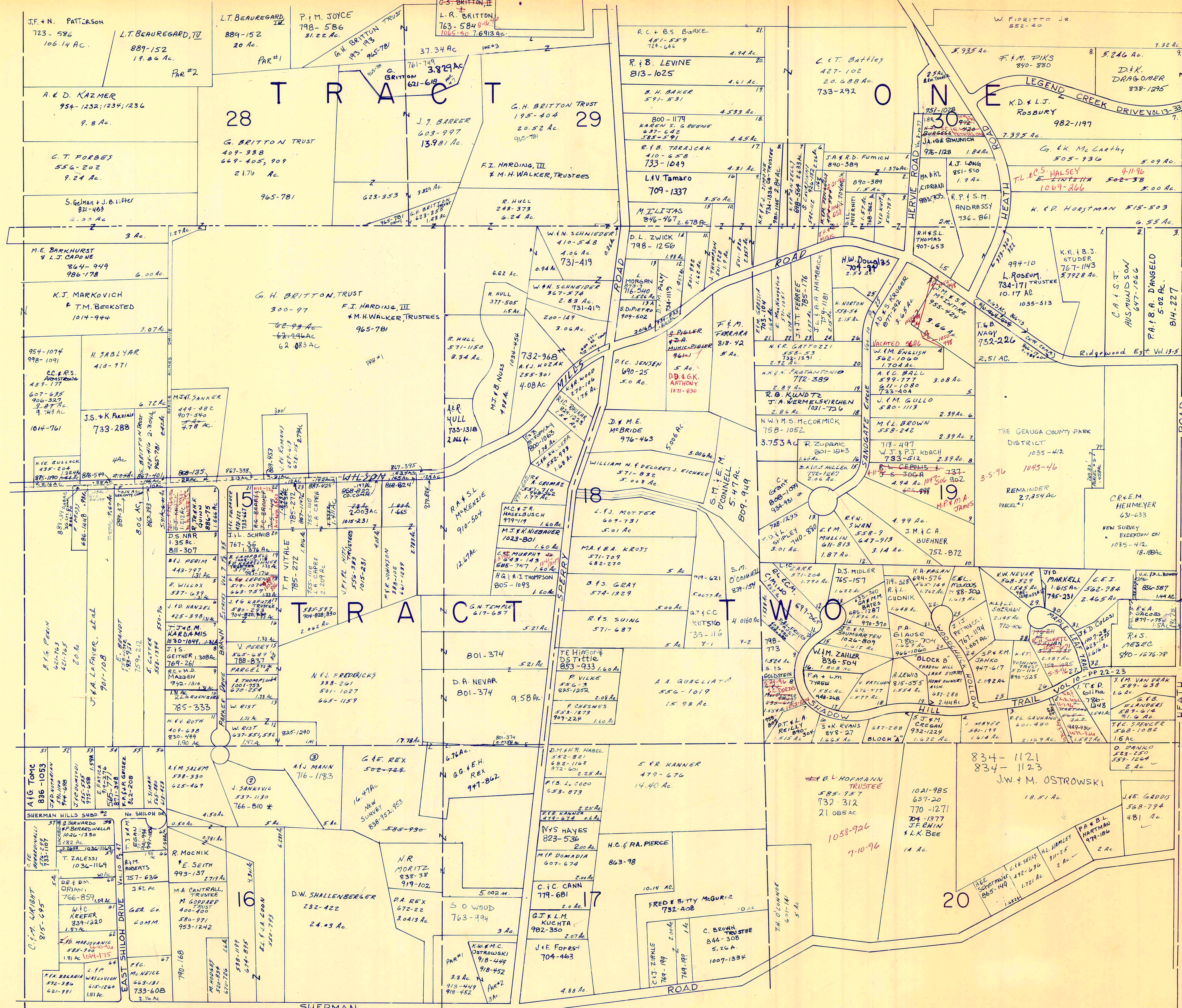
\* Inadequate description  
 ✓ indicates survey on file with tax map dept.

- 199-29-04, 200-50 Whiting to J. 7.67 A
- 12. 741-288 M.D. JOICE
- 13. 801-108 T.J. DOUGLASS
- 14. (520-181) AL DOUGLASS
- 15. 484-524 R. BARNES 856-3902
- 16. 1/4 A. F.P. WHITE 828-1306 6.10.96
- 17. J.W. J. ZEITLER 1054-890
- 18. 210-41 D.L. Perry
- 19. 253-123 C.S. Whiting
- 20. 1034-1074 B.A. BLACKETT
- 21. 200A P.J. ALIOTO & C.M. MALONE 992-1046
- 22. 356-291 J.A. & H.L. Perry
- 23. 341-577 W.M. THORNTON
- 24. J.A. & H.L. Perry 350-2316
- 25. J.E. & E. DUBASH 734-91
- 26. N.M. SARY 706-429 1007-756
- 27. C. N. SARY
- 28. R.L. & E. ABBOTT 730-1204 G.D. PECK 101-4
- 29. S. I. D. J. KRAFT 766-528
- 30. R. G. GRIFFIN 734-1161 1006-8
- 31. M. J. S. SARY 734-1161 1006-8
- 32. G. L. G. GRIFFIN 615-2211 RESIDENCES 1085-114 12-23-96

JANUARY, 1996  
 RELATIVE REPRESENTATION

A	B	C	D
E	F	G	H
I	J	K	L
M	N	O	P





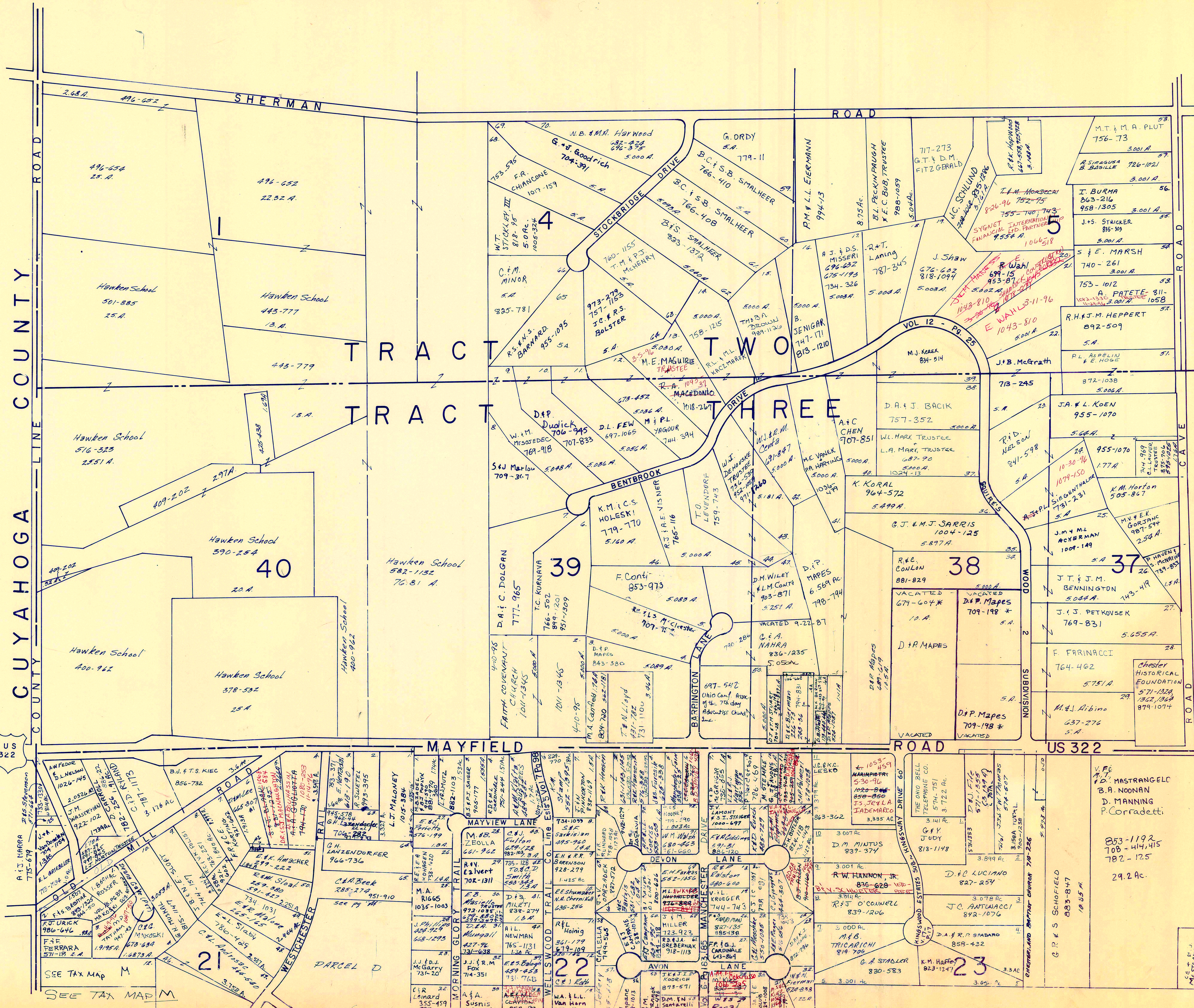
GAUGA CO. COMM.  
 ✓ R/W - WILSON MILLS Rd.  
 867-412 = .166 AC  
 867-396 = .634 AC  
 867-398 = .213 AC  
 869-453 = .21 AC  
 867-393 = .10 AC  
 ✓ 867-1147 = .12 AC  
 868-125 = .22 AC  
 875-549 = .25 AC  
 868-824 = .165 AC  
 868-822 = .177 AC  
 867-424 = .142 AC  
 867-39 = .068 AC  
 869-37 = .14 AC  
 879-824 = .129 AC  
 944-179 = .13 AC  
 ✓ 872-934-935 = .20 AC

\* Inadequate description  
 ✓ indicates survey on file with tax map dept.

JANUARY 1, 1996  
 RELATIVE REPRESENTATION

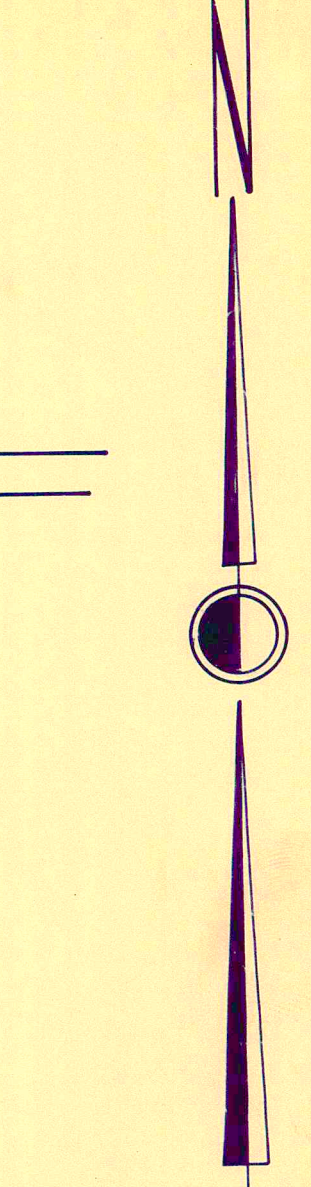
A	B	C	D
E	F	G	H
I	J	K	L
M	N	O	P

CHESTER H



US 322

US 322



SCALE 1"=300

JANUARY 1, 1996

A	B	C	D
E	F	G	H
J	K	L	
M	N	O	P

CHESTER I

\* LATIVE RE. REPRESENTATION

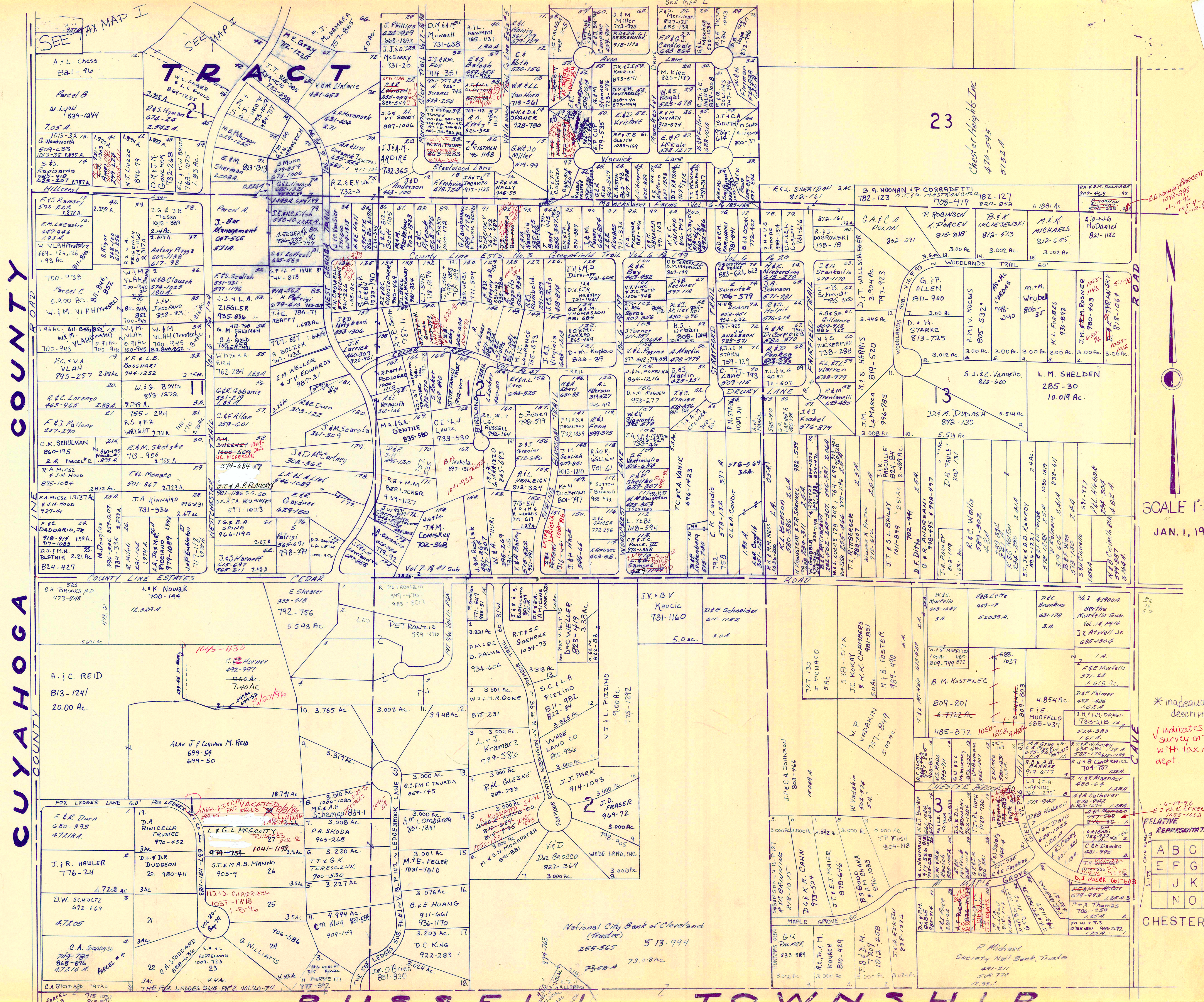
\* Inadequate description  
 ✓ indicates survey on file with tax map

CHESTER









SEE TAX MAP I

SEE TAX MAP II

TRACT

COUNTRY ROAD

COUNTRY ROAD

COUNTRY ROAD

COUNTY LINE ESTATES

CEDRAR

CEDRAR

CEDRAR

CEDRAR

CEDRAR

CEDRAR

CEDRAR

A. & C. REID  
813-1241  
20.00 AC.

ALAN J. & CORINNE M. REID  
699-54  
699-50

E. Shearer  
385-418  
792-756  
5593 AC.

PETRONZIO  
599-410  
988-307  
599-410

J.Y. & B.V. Kavcic  
731-1160

D.F. Schneider  
611-1182

B.M. Kostelec  
809-801  
6-7722 AC.

W. P. VADAKIN  
757-519  
5.00 AC.

J. & R. HAULER  
776-24

D.W. SCHOLTZ  
472-05

C.A. SADDLER  
709-790  
868-876  
47216 AC.

J. PARK  
914-1093

J.D. FRASER  
969-72

J.P. & C.A. JOHNSON  
803-766

B. M. KOSTELEK  
809-801  
6-7722 AC.

W. P. VADAKIN  
757-519  
5.00 AC.

D.W. SCHOLTZ  
472-05

C.A. SADDLER  
709-790  
868-876  
47216 AC.

J. PARK  
914-1093

J.D. FRASER  
969-72

J.P. & C.A. JOHNSON  
803-766

B. M. KOSTELEK  
809-801  
6-7722 AC.

W. P. VADAKIN  
757-519  
5.00 AC.

W. P. VADAKIN  
757-519  
5.00 AC.

C.A. SADDLER  
709-790  
868-876  
47216 AC.

C.A. SADDLER  
709-790  
868-876  
47216 AC.

J. PARK  
914-1093

J.D. FRASER  
969-72

J.P. & C.A. JOHNSON  
803-766

B. M. KOSTELEK  
809-801  
6-7722 AC.

W. P. VADAKIN  
757-519  
5.00 AC.

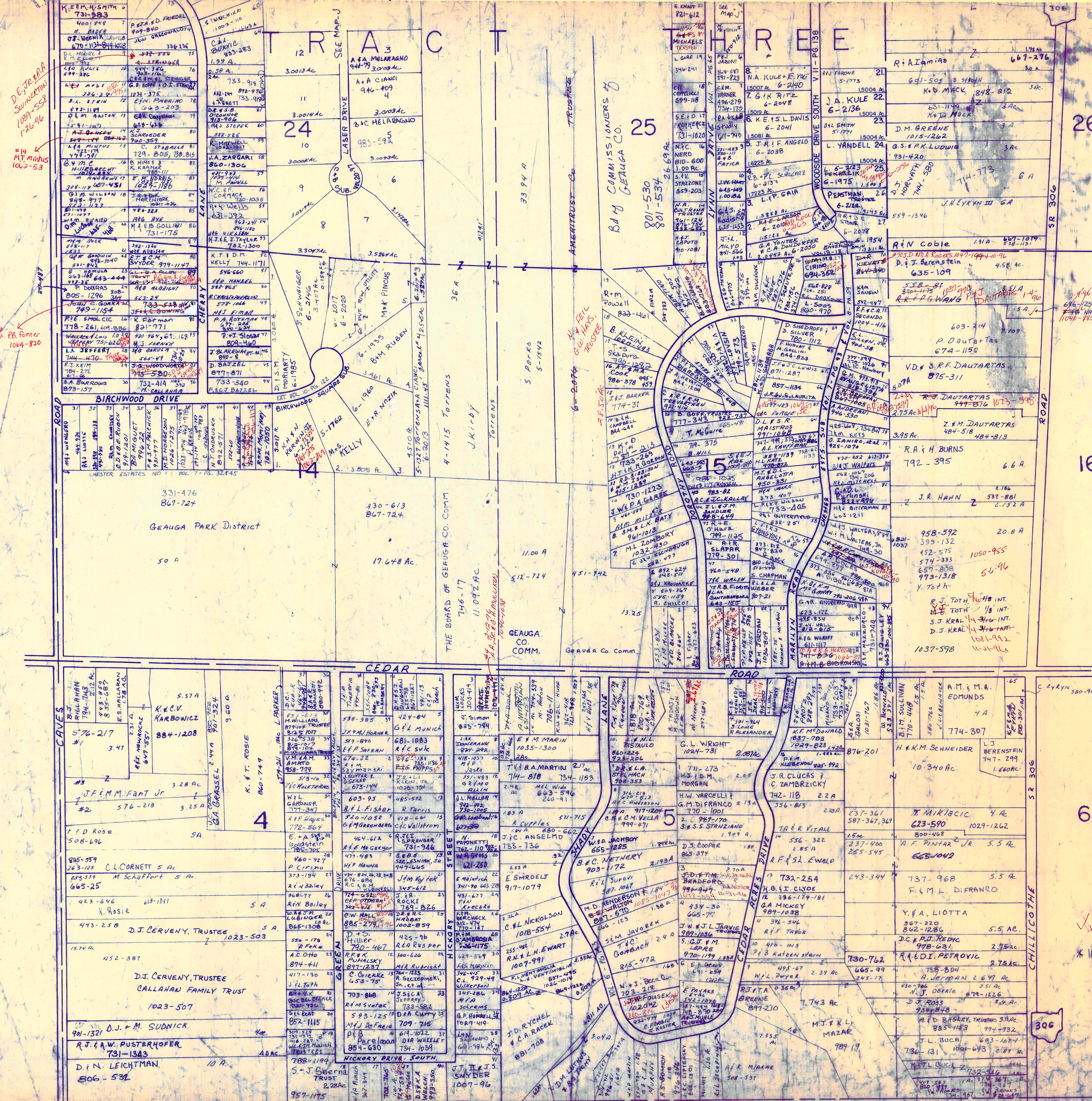
W. P. VADAKIN  
757-519  
5.00 AC.

SCALE 1" = 30'  
JAN. 1, 1996

\* inadequate description  
✓ indicates survey on file with tax map dept.

RELATIVE REPRESENTATION grid with letters A-D, E-F, G-H, I-K, L-N

CHESTER M...



D.E. J.E. R.A. SWANBERG  
1009-558  
106-06  
#14 MT. MINUS  
1063-53

#18 P.B. FORTER  
1064-830

A. FELT  
6-2074  
6-2075  
6-2076  
6-2077  
6-2078  
6-2079  
6-2080  
6-2081  
6-2082  
6-2083  
6-2084  
6-2085  
6-2086  
6-2087  
6-2088  
6-2089  
6-2090  
6-2091  
6-2092  
6-2093  
6-2094  
6-2095  
6-2096  
6-2097  
6-2098  
6-2099  
6-2100

2-946  
2-947  
2-948  
2-949  
2-950  
2-951  
2-952  
2-953  
2-954  
2-955  
2-956  
2-957  
2-958  
2-959  
2-960  
2-961  
2-962  
2-963  
2-964  
2-965  
2-966  
2-967  
2-968  
2-969  
2-970  
2-971  
2-972  
2-973  
2-974  
2-975  
2-976  
2-977  
2-978  
2-979  
2-980

indicates survey on file  
with the tax map dept.

\* Inadequate  
description

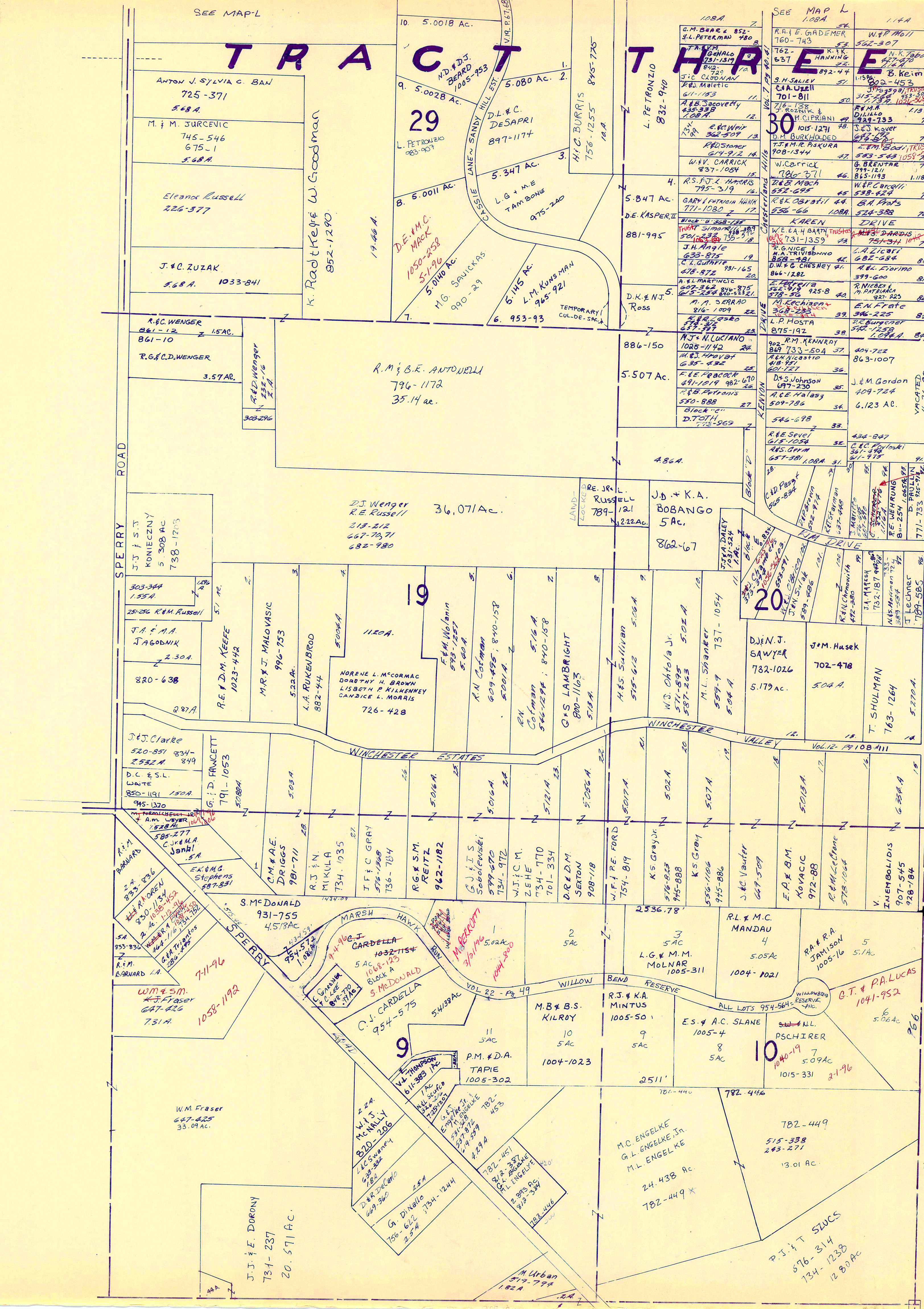
JANUARY 1, 1996  
RELATIVE REPRESENTATION

A	B	C	D
E	F	G	H
I	J	K	L
M	O	P	

CHESTER N

SCALE 1" = 300'





MUNSON TOWNSHIP

SCALE 1" = 300'  
JANUARY 1, 1996

RELATIVE REPRESENTATION

\* Inadequate description  
✓ indicates survey on file with tax map dept.

A	B	C	D
E	F	G	H
I	J	K	L
M	N	O	

CHESTER P

CHESTER

1996

#94 KRAEGER

#94 J.P. & A. NOVEMBER 1038-546 1-12-96

20

19

9

10

SEE MAP L

SEE MAP L

MATCH LINE

TRACT

TRACT

ANTON J. SYLVIA C. BAN  
725-371  
5.68 A.

M. J. JURCEVIC  
745-546  
675-1  
5.68 A.

Eleanor Russell  
226-377

J. & C. ZUZAK  
6.68 A. 1033-841

R. & C. WENGER  
861-12  
Z 15AC.  
861-10

R.G. & L.D. WENGER  
3.57 AC.

J.J. & S.J. KONIECZNY  
5.308 AC  
738-1715

J.A. & A.A. JAGODNIK  
2.30 A.

J. & J. CLARKE  
520-851 834-  
2552 A. 849

W.M. & S.M. FRASER  
647-426  
731 A.

W.M. FRASER  
647-426  
35.09 AC.

J.J. & E. DORONY  
731-237  
20.571 AC.

29  
L. PETRONZIO  
983-907

D.L. & C. DeSAPRI  
897-1174

R.M. & B.E. ANTOVILLI  
796-1172  
35.14 ac.

23 Wenger  
R.E. Russell  
218-212  
667-7671  
682-980

36.071 AC.

L. PETRONZIO  
832-940

5.847 AC.

881-995

5.507 AC.

J.D. & K.A. BOBANGO  
5 AC.  
862-67

5.507 AC.

5.507 AC.

5.507 AC.

5.507 AC.

5.507 AC.

5.507 AC.

5.507 AC.

5.507 AC.

30  
L. PETRONZIO  
832-940

5.847 AC.

881-995

5.507 AC.

J.D. & K.A. BOBANGO  
5 AC.  
862-67

5.507 AC.

5.507 AC.

5.507 AC.

5.507 AC.

5.507 AC.

5.507 AC.

5.507 AC.

5.507 AC.

30  
L. PETRONZIO  
832-940

5.847 AC.

881-995

5.507 AC.

J.D. & K.A. BOBANGO  
5 AC.  
862-67

5.507 AC.

5.507 AC.

5.507 AC.

5.507 AC.

5.507 AC.

5.507 AC.

5.507 AC.

5.507 AC.